

BIOLOGIE ÉPREUVE DE SYNTHÈSE

Durée : 3 heures

L'usage d'abaques, de tables, de calculatrice et de tout instrument électronique susceptible de permettre au candidat d'accéder à des données et de les traiter par les moyens autres que ceux fournis dans le sujet est interdit.

Chaque candidat est responsable de la vérification de son sujet d'épreuve : pagination et impression de chaque page. Ce contrôle doit être fait en début d'épreuve. En cas de doute, le candidat doit alerter au plus tôt le surveillant qui vérifiera et, éventuellement, remplacera le sujet.

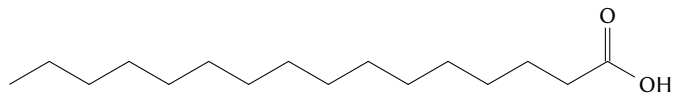
Ce sujet comporte 4 pages numérotées de 1 à 4.

Si, au cours de l'épreuve, un candidat repère ce qui lui semble être une erreur d'énoncé, il le signale sur sa copie et poursuit sa composition en expliquant les raisons des initiatives qu'il a été amené à prendre.

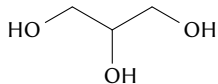
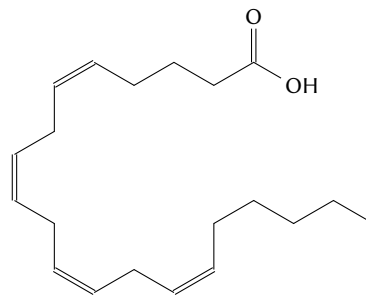
Les interactions protéines - ligands

ANNEXE : FORMULAIRE DE BIOCHIMIE

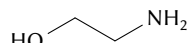
Exemple d'acide gras saturé : l'acide palmitique



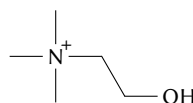
Exemple d'acide gras polyinsaturé : l'acide arachidonique



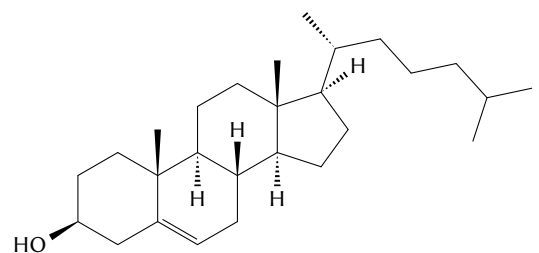
glycérol



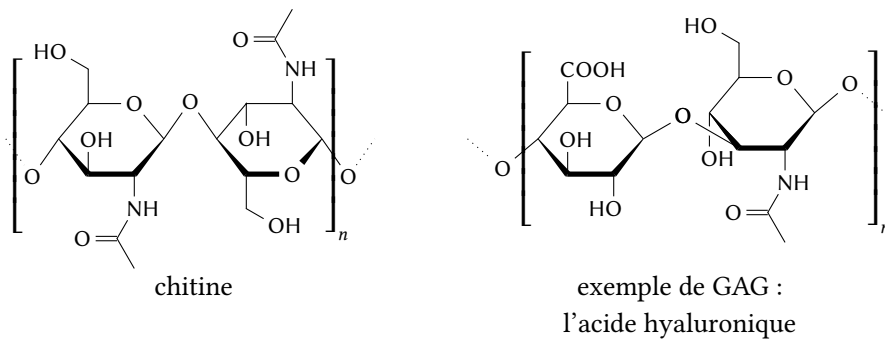
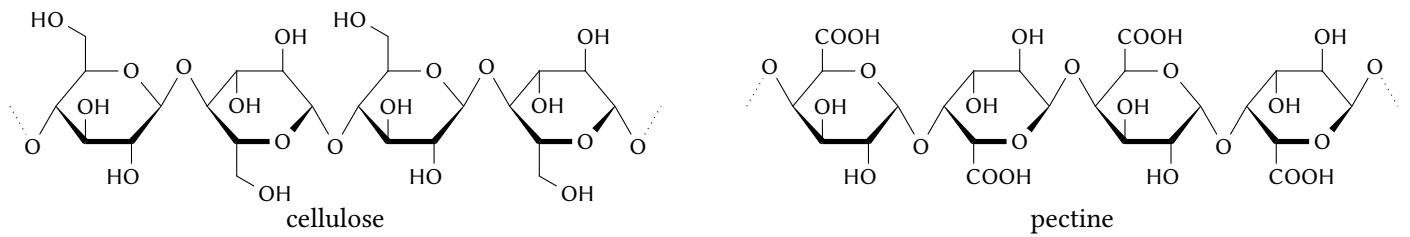
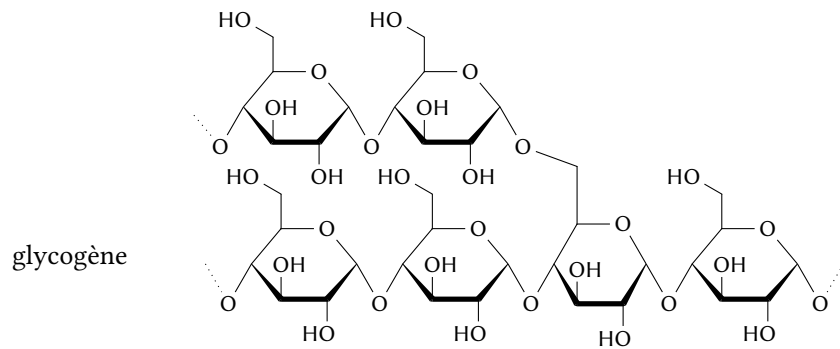
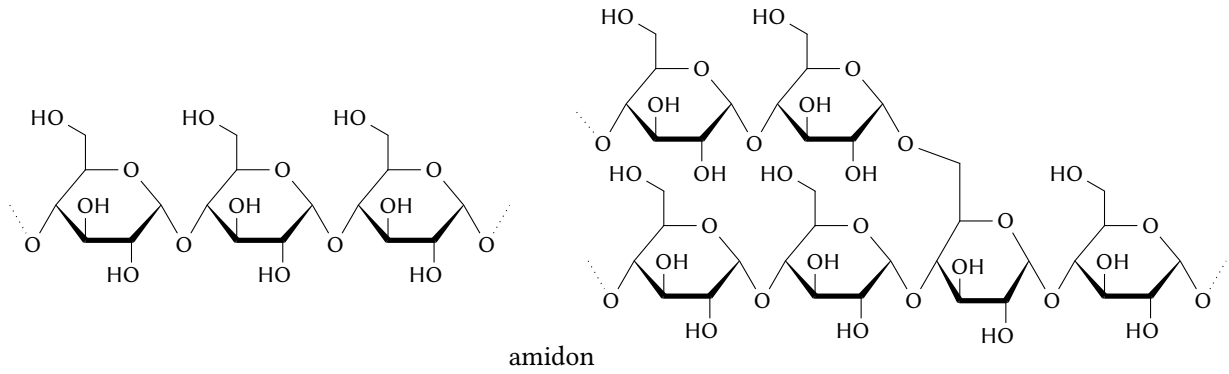
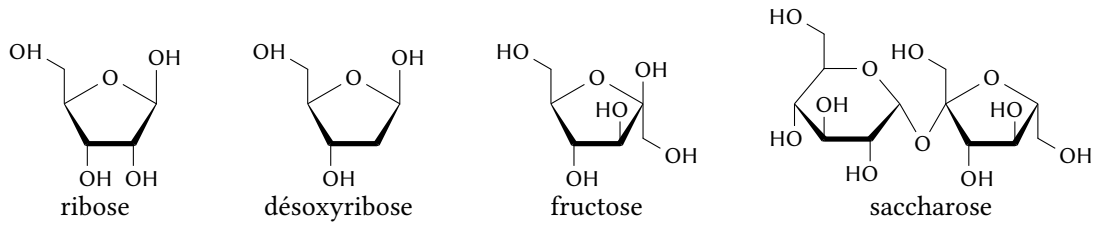
éthanolamine

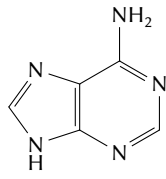


choline

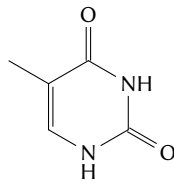


cholestérol

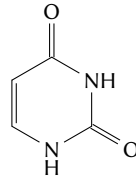




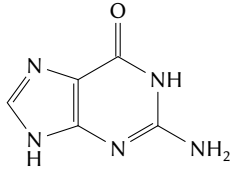
adénine



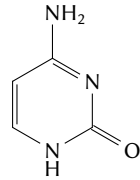
thymine



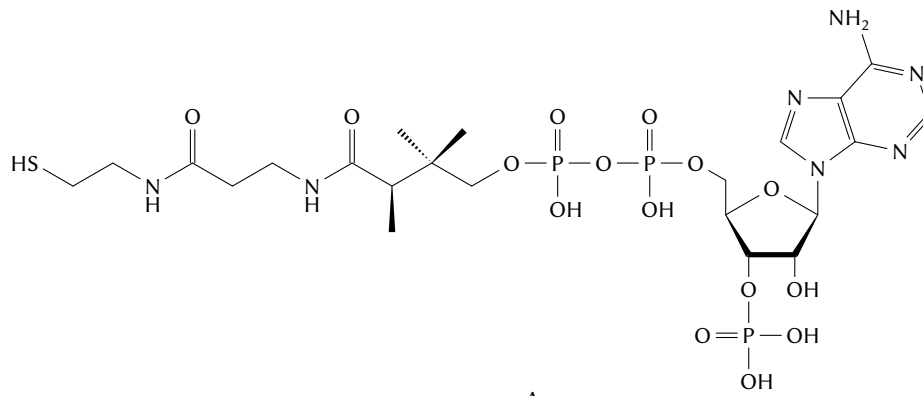
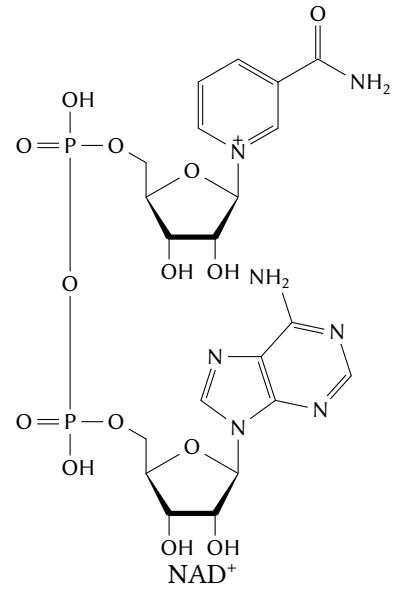
uracile



guanine

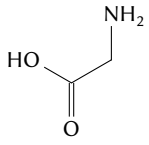


cytosine

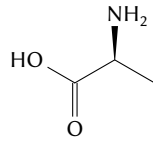


coenzyme A

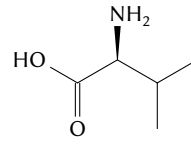
acides α -aminés (série L)



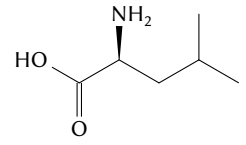
glycine (Gly, G)



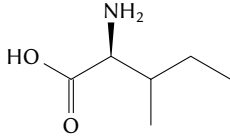
alanine (Ala, A)



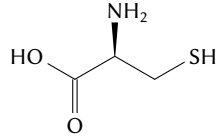
valine (Val, V)



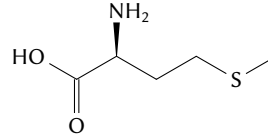
leucine (Leu, L)



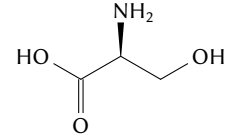
isoleucine (Ile, I)



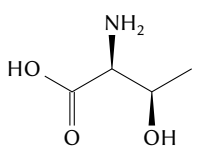
cystéine (Cys, C)



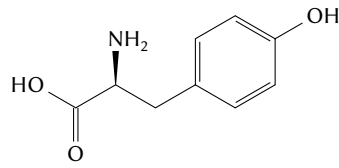
méthionine (Met, M)



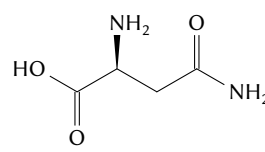
sérine (Ser, S)



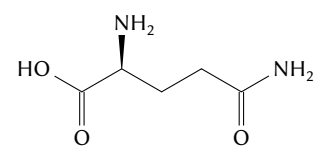
thréonine (Tre, T)



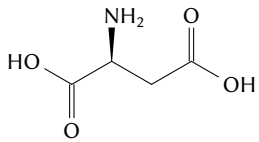
tyrosine (Tyr, Y)



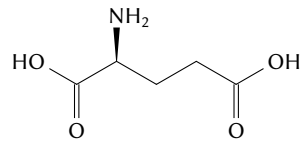
asparagine (Asp, N)



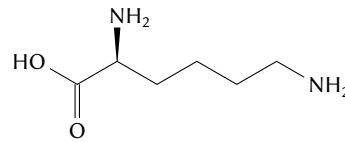
glutamine (Gln, Q)



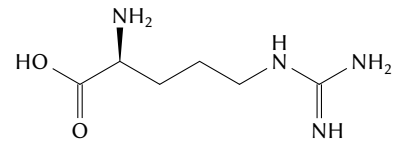
acide aspartique (Asp, D)



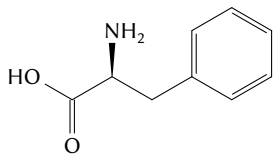
acide glutamique (Glu, E)



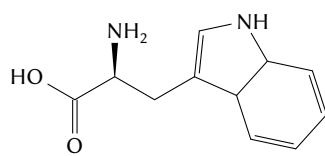
lysine (Lys, K)



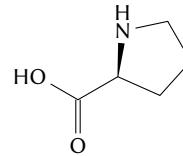
arginine (Arg, R)



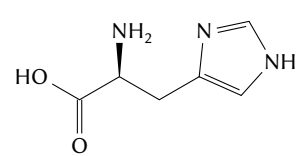
Phénylalanine (Phe, F)



tryptophane (Trp, W)



proline (Pro, P)



histidine (His, H)

FIN DU SUJET